



19" DISTRIBUTION CABINETS, WALL CABINETS & ACCESSORIES

19" DISTRIBUTION CABINET

★ Copper and fiber network deployment

✂ Solution for integrating endpoint and active equipment

✓ All formats

🚚 Supplied in kit form or assembled

DIMENSIONS

H 22 - 27 - 37 - 42 - 47U

W 600 - 800mm

D 600 - 800 - 1000 - 1200mm

COMPONENTS

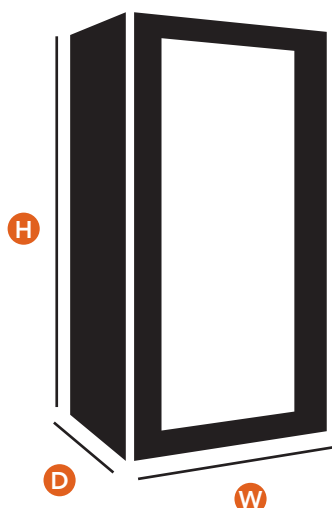
- 5mm tempered glass front door
- Removable side panels
- 70% perforated rear door
- 4 numbered and depth-adjustable 19" mounting struts
- 4 casters, including 2 with brakes
- 4 height-adjustable feet
- Perforations to allow cable passing at the top and bottom of the cabinet
- Adjustable cable inputs at the bottom of the rack (shutter plates)
- Ventilated top to integrate a ventilation kit

SPECIFICATIONS

- IP20
- Maximum load: 800kg (on adjustable feet)



REMINDER OF THE DIMENSIONS: DISTRIBUTION CABINETS



CABINET DEPTH	USABLE DEPTH <small>COMPATIBLE ACCESSORIES</small>
600mm	350mm
800mm	550mm
1000mm	750mm
1200mm	950mm



1U = 44.45mm

DISTRIBUTION CABINET

PACKAGING

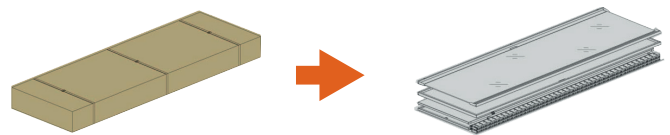
Assembled cabinet

- Custom-assembled in our workshops
- Accessories can be incorporated
- Time-saving
- Supplied on casters
- Tilt label for greater safety during transport

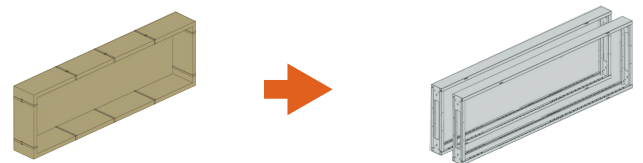


Cabinet kit delivery

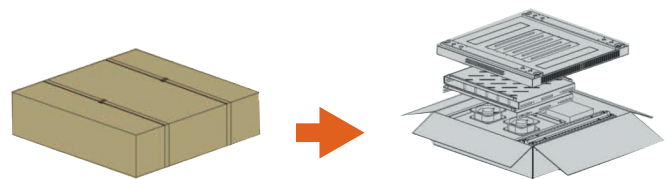
- Quick and easy assembly
- Easy to transport to the installation location
- Economical
- 3 separate packages:



Front and back doors - Side panels



Frame 19" Mounting struts



Remainder of the structure (top, bottom, asters, etc.)

DIFFERENT DOORS ARE OPTIONALLY AVAILABLE



Single glazed door



Single perforated door



Single perforated door



Double perforated door



Double solid or glazed door

19" WALL CABINET

★ Copper and fiber network deployment

✕ Distributed hardware topology

✓ Compact

🚚 Supplied in kit form or assembled

DIMENSIONS

H 6 - 9 - 12 - 15 - 18 - 22U

W 600mm

D 450 - 600mm

COMPONENTS

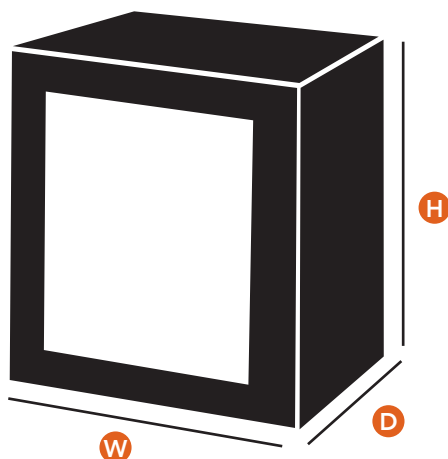
- 5mm tempered glass front door
- Solid rear panel
- Removable side panels
- 4 numbered and depth-adjustable 19" mounting struts
- Perforations to allow cable passing at the top and bottom of the box
- Wall fastening kit
- Ventilated top to integrate a ventilation kit

SPECIFICATIONS

- IP20
- Maximum load: 60kg
- Color: Black (RAL 9004)
- Material: Cold folded steel
- Complies with ANSI / EIA RS-310-D, IEC 297-2, DIN 41491 Part 1, DIN 41494 Part 7 standards



REMINDER OF THE DIMENSIONS: WALL CABINETS



WALL CABINET DEPTH	USABLE DEPTH COMPATIBLE ACCESSORIES
450mm	300mm
600mm	350mm



1U = 44.45mm

WALL CABINET

PACKAGING



Assembled wall cabinet

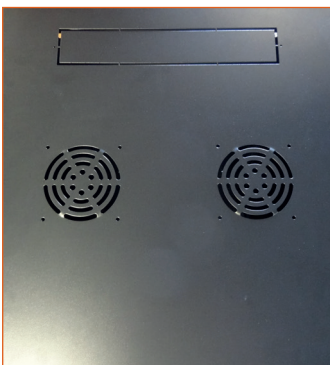
- Custom-assembled in our workshops
- Accessories can be incorporated
- Time-saving
- Delivered on pallets



Wall cabinet kit delivery

- Quick and easy assembly
- Economical
- The packaging takes up very little space
- Delivered as a single package

WALL CABINET DETAILS



Top vents and cut-outs



Side vents



19" strut and dowel pins



Glazed front door

OPTIONAL ASSEMBLY ACCESSORIES

Side panel lock →

- For distribution and wall cabinets



Earthing kit →

- For distribution and wall cabinets
- Set of 8 cables (4 male and 4 female)



Vertical cable management downspout →

- For 800mm wide, 42U height distribution cabinets
- 180° pivoting metal lid
- Plastic rings
- Adjustable opening over 2 levels



→ Set of 50 additional cage nuts, screws and washers

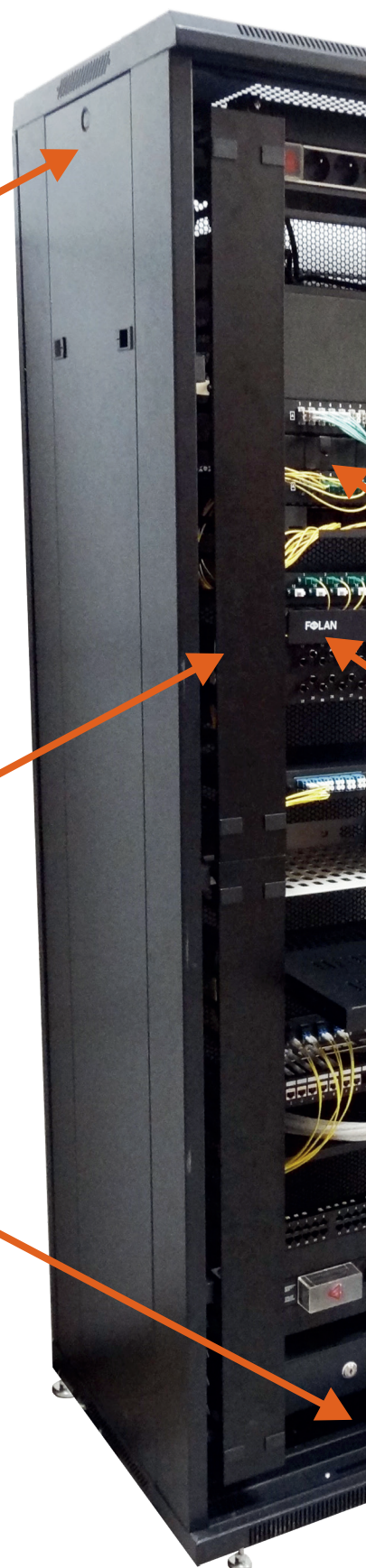
Brush panel for cable entry →

- For distribution and wall cabinets
- Cut-outs at the top and bottom of the rack
- Protects against dust ingress



Raising pedestal →

- For distribution cabinets
- Height: 100mm
- Fastens the rack to the floor



MANAGEMENT ACCESSORIES



→ Pairing kit

- For assembling two distribution cabinets together
- Set of 6



→ Brush panel for cable entry

- 1U



→ Solid strips

- 1, 2, 3 or 4U
- Protects against dust and exterior air flow
- Finishes the installation



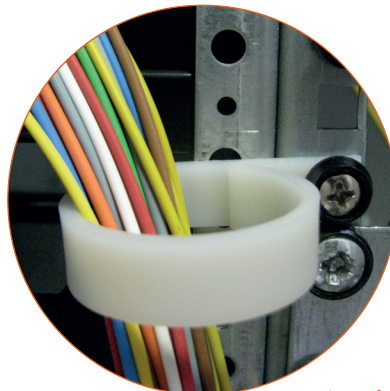
→ 5-ring cable guide strip

- 1 or 2U
- Metal rings



→ Cable guide strip with protector

- 24 plastic rings
- Removable pivoting lid



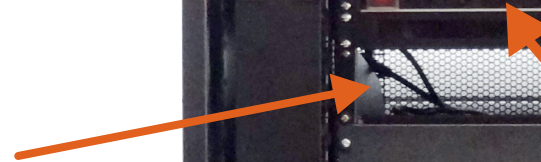
→ Plastic cable guide ring, per unit

- Fastens to 19" strut
- Ideal for distribution cabinets over 600mm wide
- 2 diameters:
 - Ø 25mm: horizontal cable passage at drawer output
 - Ø 38mm: vertical cable passage

ORGANIZATION ACCESSORIES

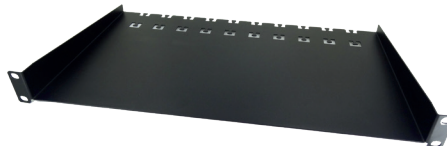
2U fixed tray →

- 2 point front fastening
- Maximum load: 25kg
- Depth 300 or 350mm



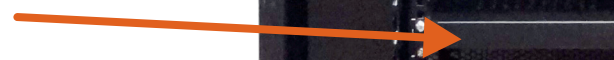
Patchcord management tray →

- Cable fastening at the back
- Shallow depth
- Fixed tray



Sliding tray →

- 4 point fastening
- Maximum load: 40kg
- Depth 300, 500 or 700mm



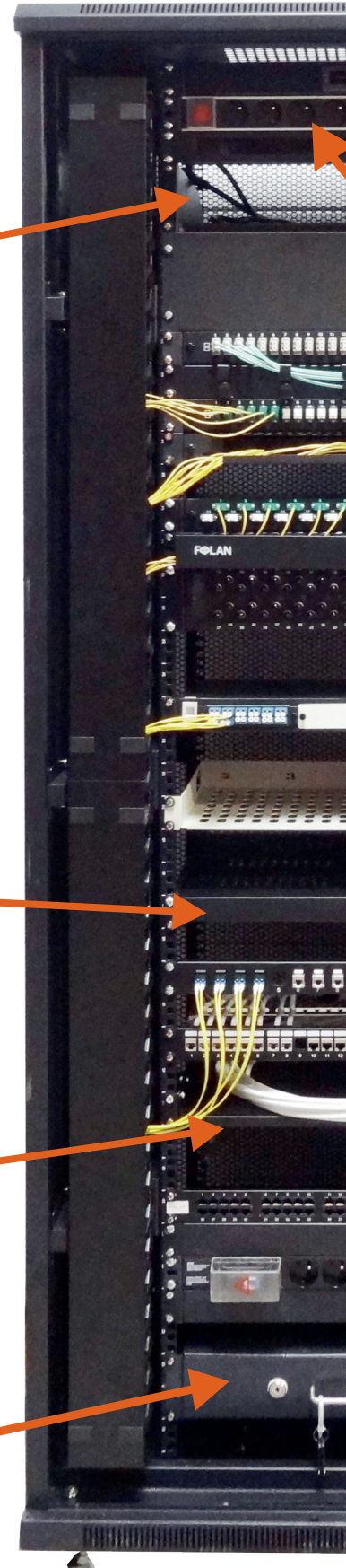
1U fixed tray →

- 4 point fastening
- Maximum load: 60kg
- Depth 300, 500 or 700mm

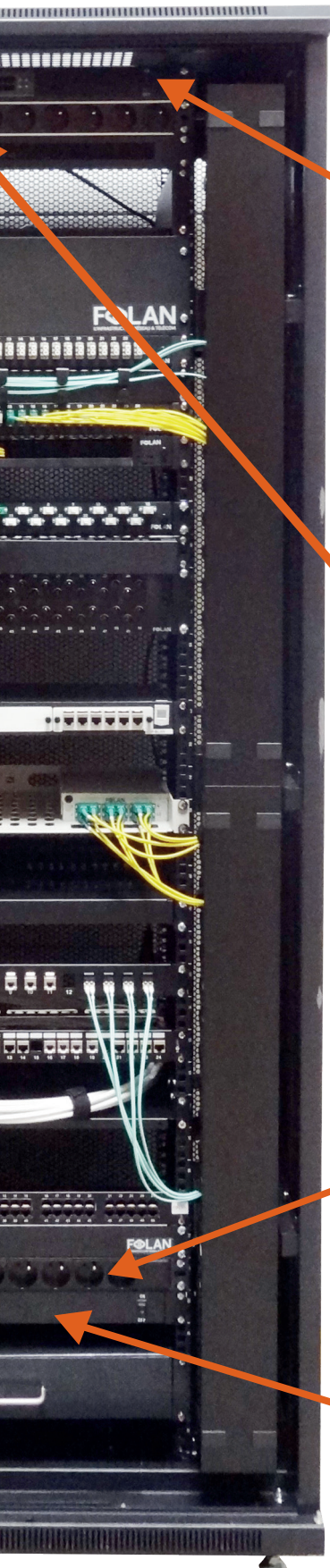


2U storage drawer →

- With lock and handle
- Maximum load: 40kg
- Depth 300mm



ELECTRICAL ACCESSORIES



← Ventilation systems

- With thermostat: 2 or 4 fans
- Specially designed for the top and suited to the depth of the distribution cabinet
- Per unit, for replacement



← 6-socket power supply strips

- With switch, circuit breaker and 3 indicator lights
- With 30mA RCD



← 9-socket power supply strip

- With indicator light
- With switch



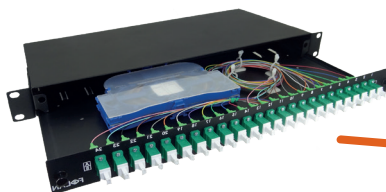
← Ventilation system

- Single, with switch
- 2, 4 or 6 fans

OPTICAL FIBER ACCESSORIES

Milano 1U patch panel →

- Sliding tray
- Capacity: 48 OF
- 6 cable inputs at the back
- Ideal for direct connectorization
- Economical patch panel



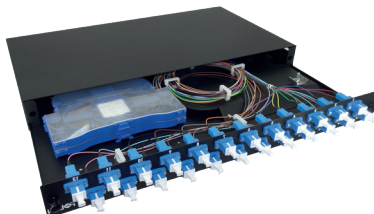
1U patchcord tray →

- Sliding tray
- 3 coiling zones
- Dust-proof brush at the front



Delphi patch panel →

- Sliding tray
- 1 or 2U
- Capacity: 48 or 96 OF
- 2 cable inputs at the back
- Extension for overlength coiling



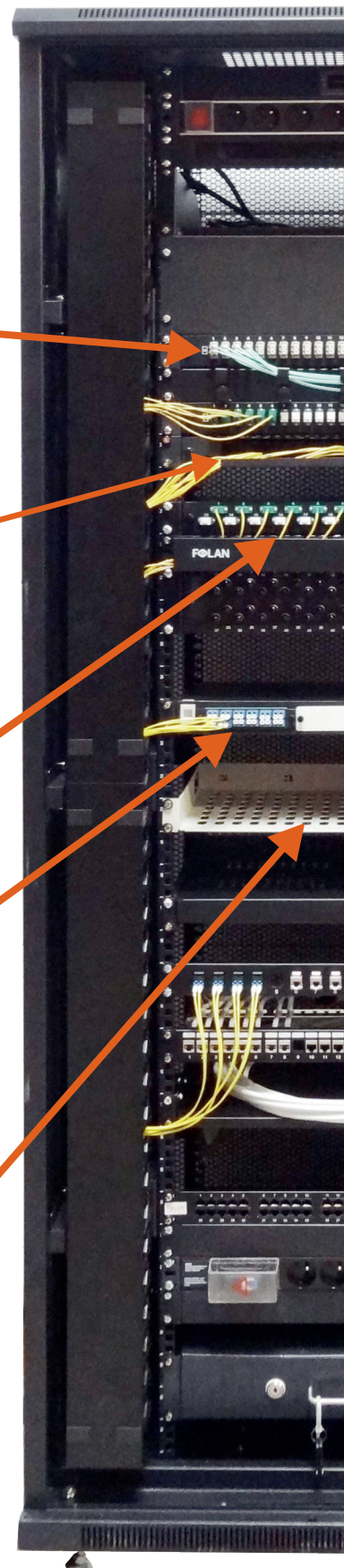
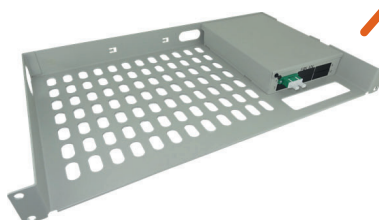
1U MTP patch panel →

- Sliding tray
- Capacity: 72 OF – 3 x 24 OF splicing trays
- Splicing tray format: Snap-in
- 2 cable inputs at the back
- RJ45 front available

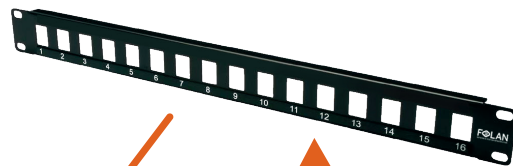


Modem tray →

- Fixed tray
- Capacity: 12 OF
- Cable fastening at the back
- Passive equipment integration

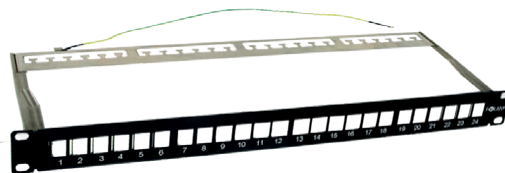
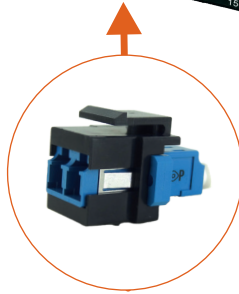


COPPER ACCESSORIES



← 16 port RJ45 patch panel

- 1U numbered front panel
- Metal strip
- Compatible with SC format adapter on RJ45



← 24 port RJ45 patch panel

- 1U numbered front panel
- Removable metal mount
- Cable fastening at the back
- Integrated earthing



← 1U telephone panel

- 25 or 50 ports
- Category 3
- Cable fastening at the back



To complete your installation, also have a look at the FOLAN fiber and copper dispatching patchcords.



Call +33 (0)4 78 800 810 for all inquiries.



692 rue des Mercières
69140 Rillieux-la-Pape - FRANCE
contact@folan.net
www.folan.net
+33 (0)4 78 800 810